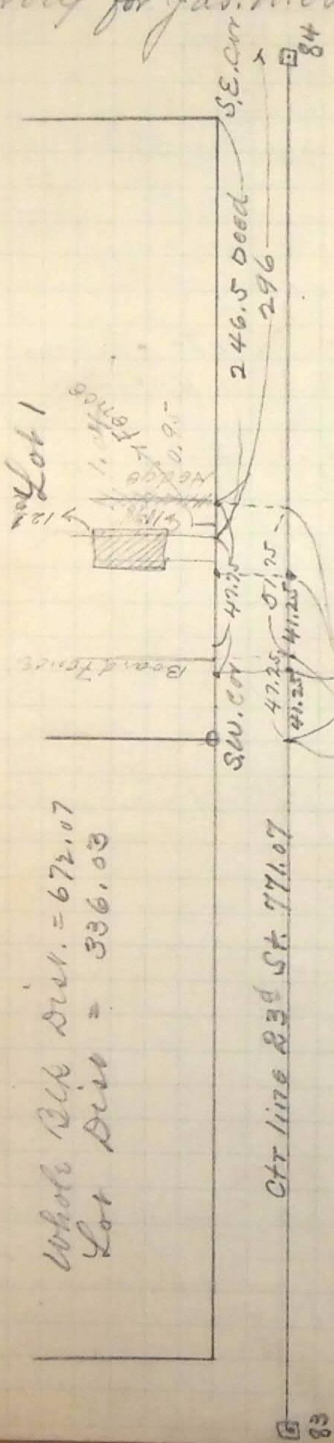


Survey for Jas. McBeth. Jan 12th 1849.

DeVoto & Jenkins
Jenkins & Helms

Block 11 Plat B.



Whole Blk Dist. = 672.07
Lot Dist = 336.03

Found monuments and measured by my tape = 771.50 $\frac{1}{2}$ = 385.75
 Spoke back from street line 166
 Length of house 584

81.75	51.75	93
41.25	52.25	11.25
92.00	51.25	11.75
82.50	10.5	7.03
93.5	105	93.00
5.50	6.5	
10.00	17	

246.5	385.75	47.25
49.5	296.00	47.25
296.0	89.75	88.50
	51.75	
	44.75	
	38.00	42.00

Platted same day

Recorded Dist = 771.07
 my measure Jan 10th = 771.52 self & Jenkins
 " " 12th = 771.50 DeVoto & Jenkins
 Last measure adopted.
 Corrections = 0.0056 per foot
 1/2 Block Dist corrected = 385.75

41.25 = 41.27 +
 47.25 = 47.28 -
 51.75 = 51.78 -

Rear of house 12 1/2" on line = 60 ft
 Front " " 11 3/8" " " = 90 ft.

Inclination slope 02 45' v-sin = 0.1 correction

Monuments 83 & 84 Established 1890 May 16th

Jan 16 - from fence to porch roof 20
 Frank Steiny by title deed 78-4
 to name S. McBeth June 22 1894

Julia S. Chapple for closed
 to H. C. Loom & Jacobs Feb 12/95
 Oct 30th 1890

Sin 1' = 0.002909 = 1.53 in one mile 58.7' 0.58' 0.00137
 0.00137
 Less than 30" or 1/2 min (1' = 28")